



eIF4A1 Monoclonal Antibody(M8)

Catalog No	YP-Ab-00631
Isotype	IgG
Reactivity	Human;Mouse;Rat
Applications	WB;IHC;IF
Gene Name	EIF4A1
Protein Name	Eukaryotic initiation factor 4A-I
Immunogen	Synthetic Peptide of eIF4A1
Specificity	The antibody detects endogenous eIF4A1 protein.
Formulation	PBS, pH 7.4, containing 0.5%BSA, 0.02% sodium azide as Preservative and 50% Glycerol.
Source	Monoclonal, Mouse
Purification	The antibody was affinity-purified from mouse ascites by affinity-chromatography using specific immunogen.
Dilution	WB: 1:1000-3000 IF: 1:100-200 IHC 1:50-300
Concentration	1 mg/ml
Purity	≥90%
Storage Stability	-20°C/1 year
Synonyms	Eukaryotic initiation factor 4A-I (eIF-4A-I) (eIF4A-I) (EC 3.6.4.13) (ATP-dependent RNA helicase eIF4A-1)
Observed Band	48kD
Cell Pathway	nucleus,cytoplasm,cytosol,membrane,eukaryotic translation initiation factor 4F complex,extracellular matrix,extracellular exosome,
Tissue Specificity	Bone marrow,Lung,Spleen,
Function	function:ATP-dependent RNA helicase which is a subunit of the eIF4F complex involved in cap recognition and is required for mRNA binding to ribosome. In the current model of translation initiation, eIF4A unwinds RNA secondary structures in the 5'-UTR of mRNAs which is necessary to allow efficient binding of the small ribosomal subunit, and subsequent scanning for the initiator codon.,similarity:Belongs to the DEAD box helicase family.,similarity:Belongs to the DEAD box helicase family. eIF4A subfamily.,similarity:Contains 1 helicase ATP-binding domain.,similarity:Contains 1 helicase C-terminal domain.,subunit:eIF4F is a multi-subunit complex, the composition of which varies with external and internal environmental conditions. It is composed of at least EIF4A, EIF4E and EIF4G1/EIF4G3. Interacts with PAIP1, EIF4E and RENT2. Found in a complex with XPO7, EIF4A1, ARHGAP1, VPS26A, VPS29, VPS3

**Background**

function:ATP-dependent RNA helicase which is a subunit of the eIF4F complex involved in cap recognition and is required for mRNA binding to ribosome. In the current model of translation initiation, eIF4A unwinds RNA secondary structures in the 5'-UTR of mRNAs which is necessary to allow efficient binding of the small ribosomal subunit, and subsequent scanning for the initiator codon.,similarity:Belongs to the DEAD box helicase family.,similarity:Belongs to the DEAD box helicase family. eIF4A subfamily.,similarity:Contains 1 helicase ATP-binding domain.,similarity:Contains 1 helicase C-terminal domain.,subunit:eIF4F is a multi-subunit complex, the composition of which varies with external and internal environmental conditions. It is composed of at least EIF4A, EIF4E and EIF4G1/EIF4G3. Interacts with PAIP1, EIF4E and RENT2. Found in a complex with XPO7, EIF4A1, ARHGAP1, VPS26A, VPS29, VPS35 and SFN. May interact with NOM1.,

matters needing attention

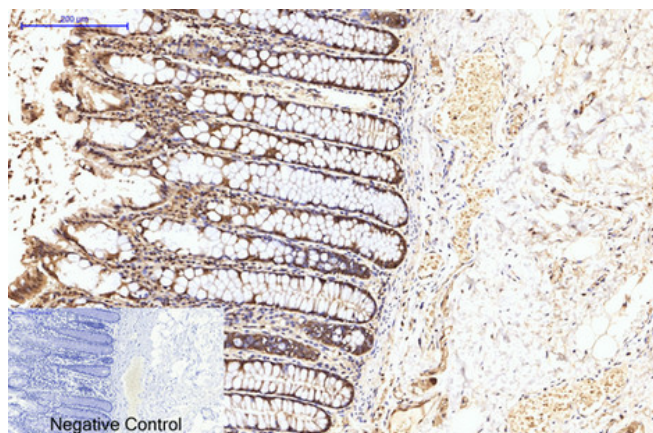
Avoid repeated freezing and thawing!

Usage suggestions

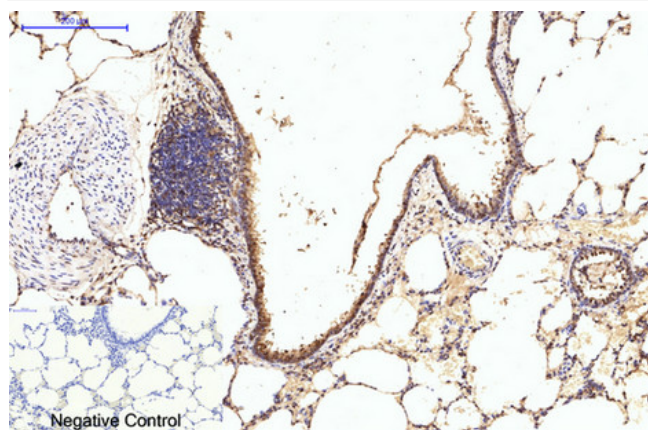
This product can be used in immunological reaction related experiments. For more information, please consult technical personnel.



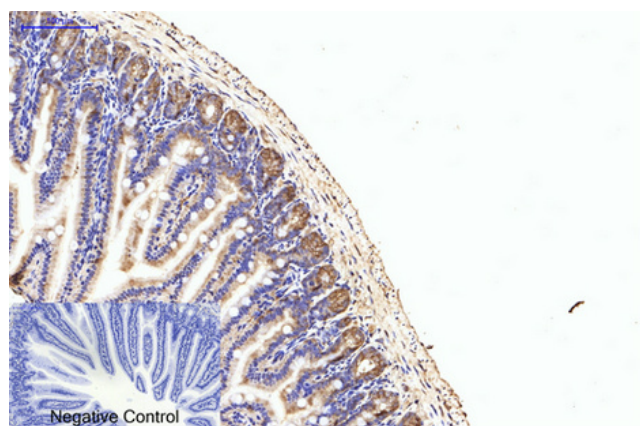
Products Images



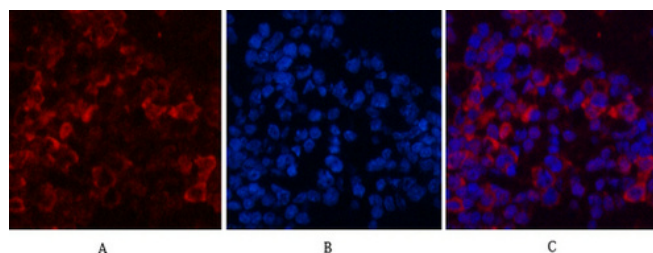
Immunohistochemical analysis of paraffin-embedded Human-colon-cancer tissue. 1,eIF4A1 Monoclonal Antibody(M8) was diluted at 1:200(4°C,overnight). 2, Sodium citrate pH 6.0 was used for antibody retrieval(>98°C,20min). 3,Secondary antibody was diluted at 1:200(room tempeRature, 30min). Negative control was used by secondary antibody only.



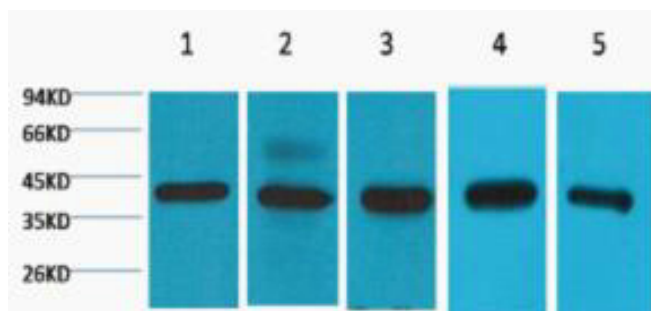
Immunohistochemical analysis of paraffin-embedded Rat-lung tissue. 1,eIF4A1 Monoclonal Antibody(M8) was diluted at 1:200(4°C,overnight). 2, Sodium citrate pH 6.0 was used for antibody retrieval(>98°C,20min). 3,Secondary antibody was diluted at 1:200(room tempeRature, 30min). Negative control was used by secondary antibody only.



Immunohistochemical analysis of paraffin-embedded Mouse-colon tissue. 1,eIF4A1 Monoclonal Antibody(M8) was diluted at 1:200(4°C,overnight). 2, Sodium citrate pH 6.0 was used for antibody retrieval(>98°C,20min). 3,Secondary antibody was diluted at 1:200(room tempeRature, 30min). Negative control was used by secondary antibody only.



Immunofluorescence analysis of Mouse-spleen tissue. 1,eIF4A1 Monoclonal Antibody(M8)(red) was diluted at 1:200(4°C,overnight). 2, Cy3 labeled Secondary antibody was diluted at 1:300(room temperature, 50min).3, Picture B: DAPI(blue) 10min. Picture A:Target. Picture B: DAPI. Picture C: merge of A+B



Western blot analysis of 1) 293T, 2) Hela, 3) HepG2, 4) Mouse Brain tissue,